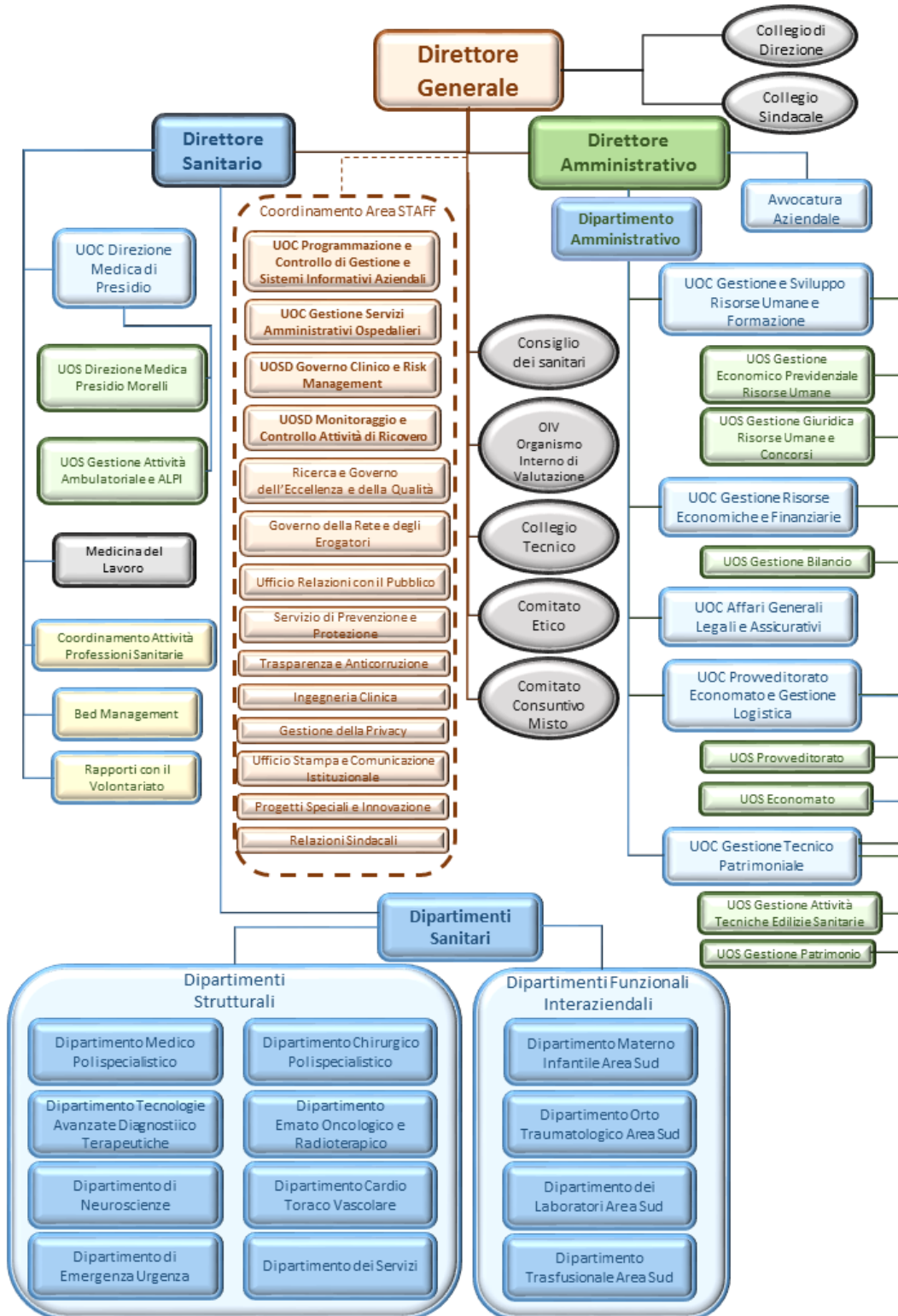
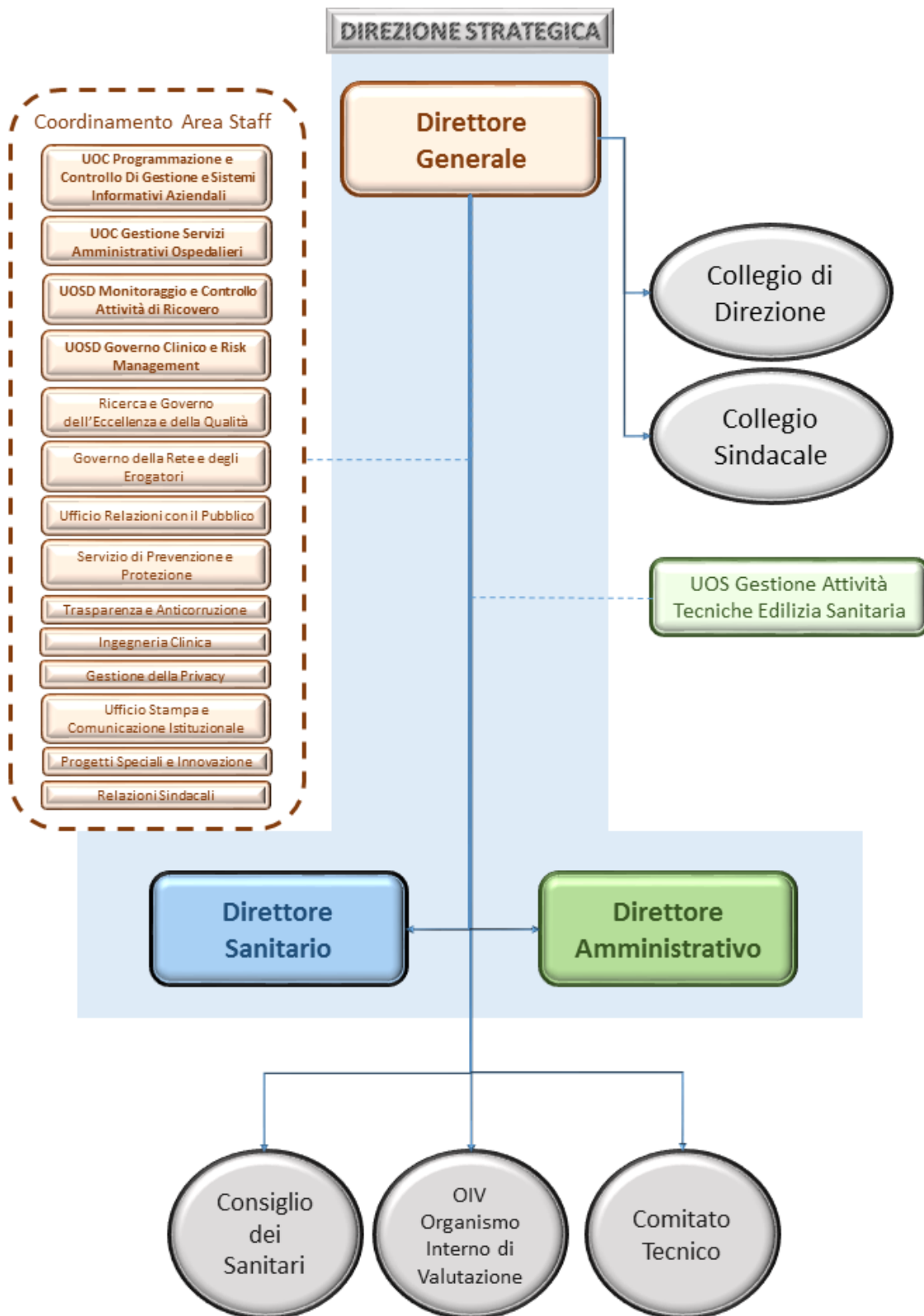


61. Organigramma






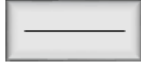
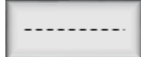


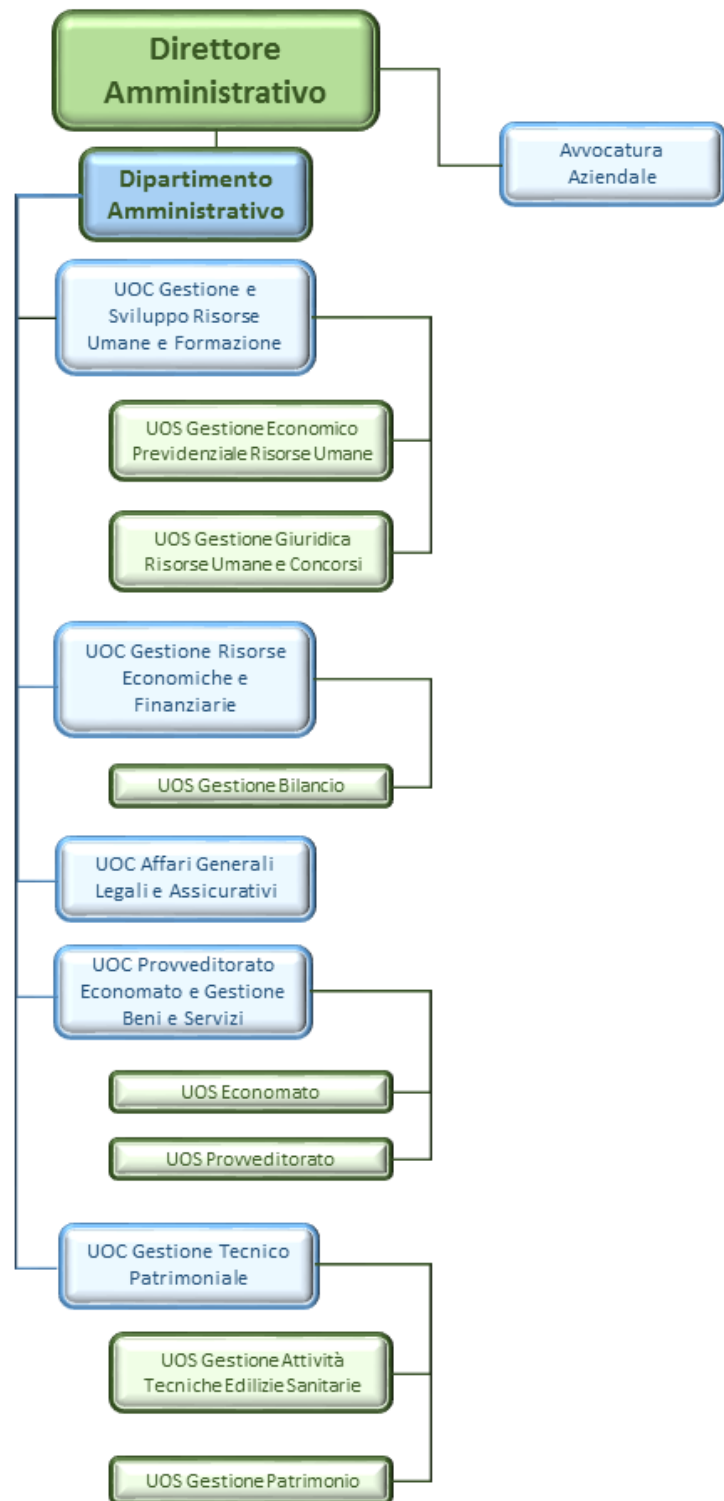


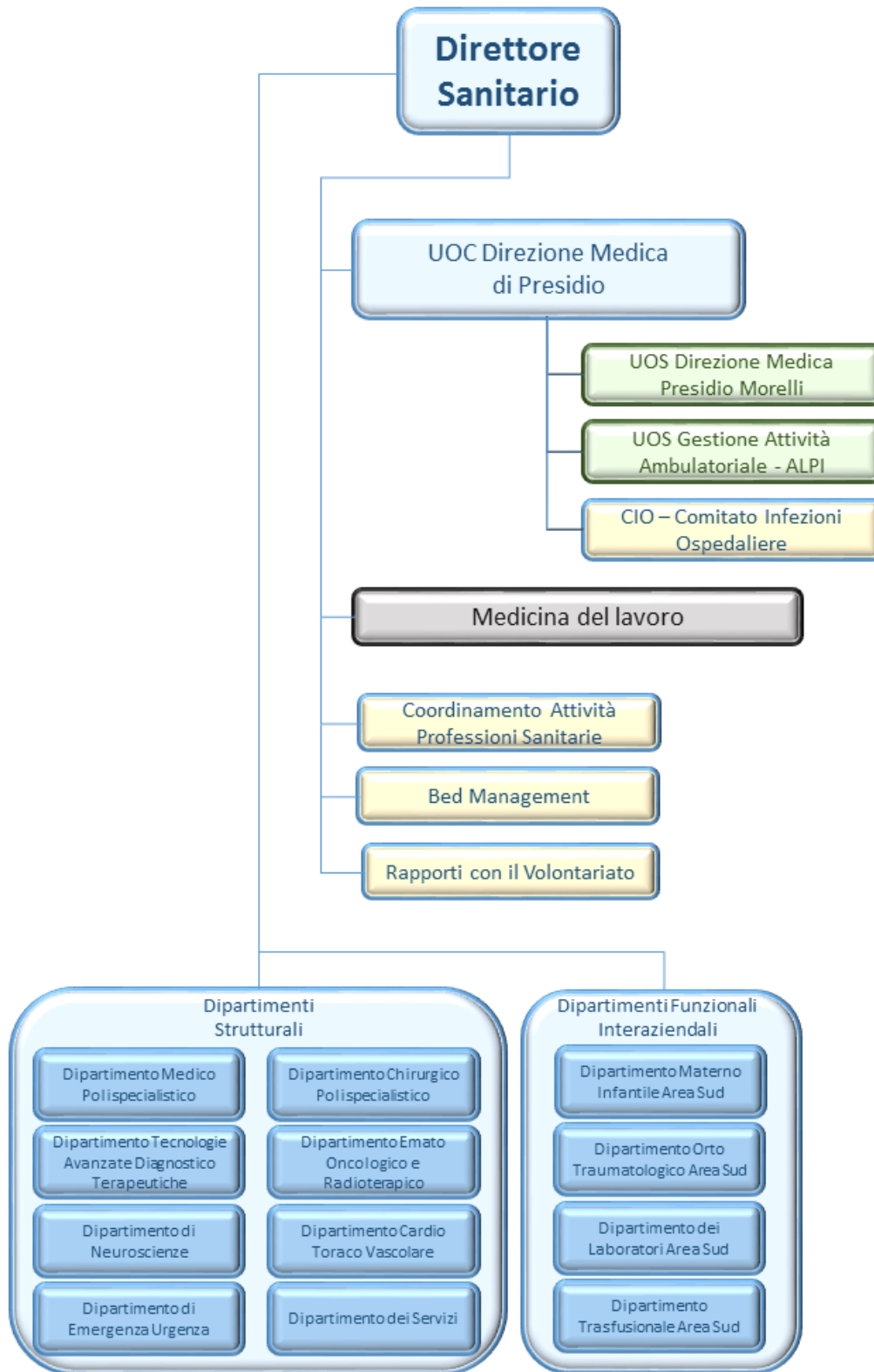


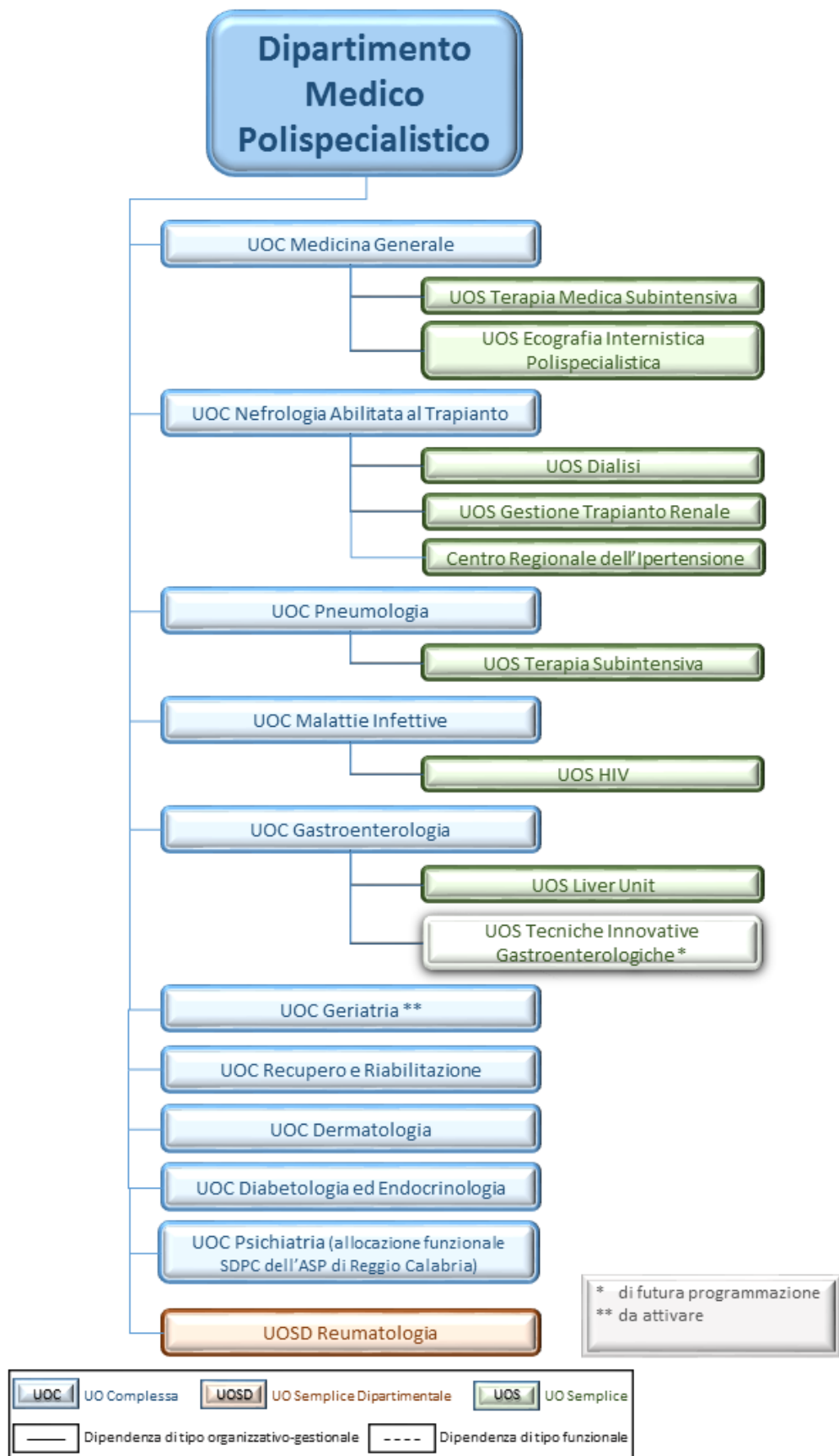
62. Articolazioni organizzative dipartimentali

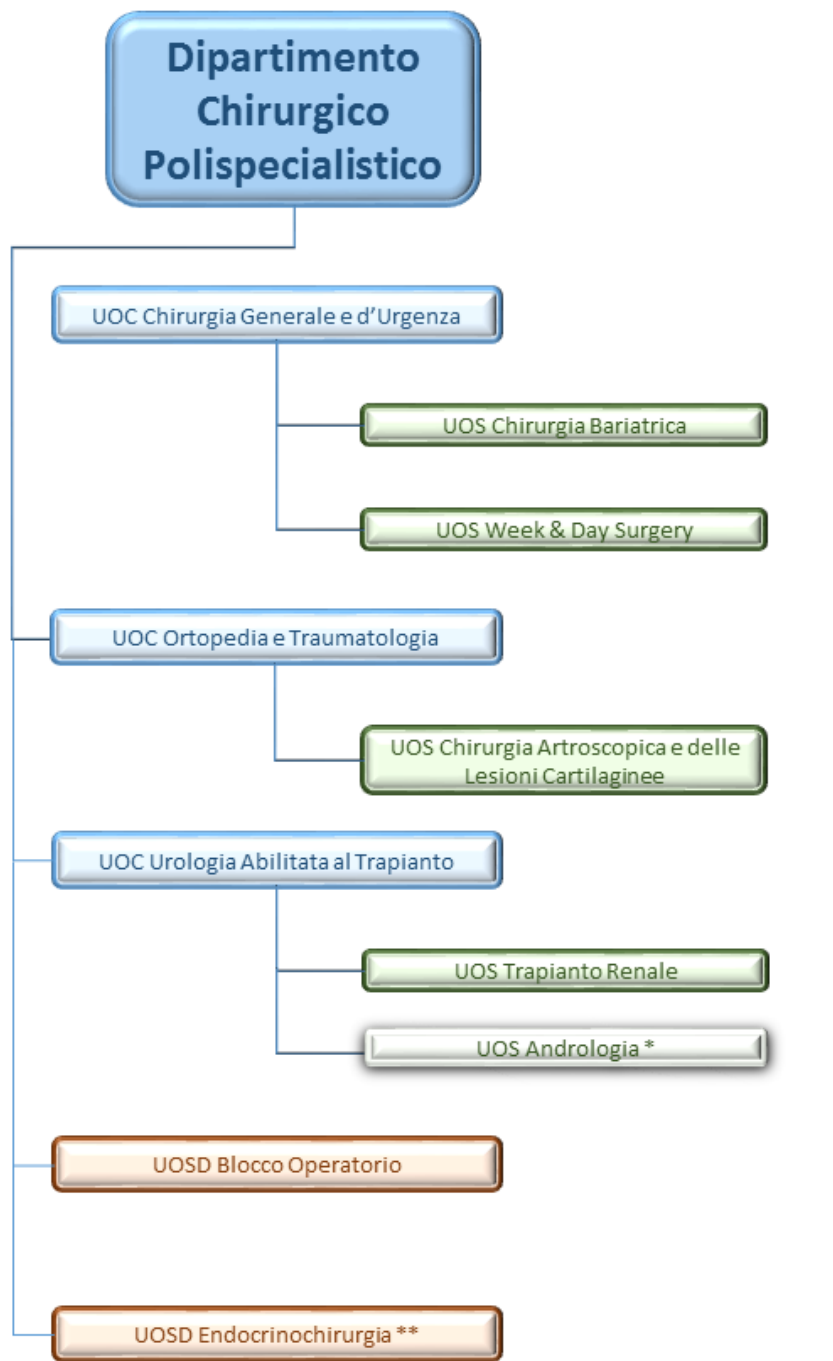
**Articolazioni
Organizzative
Dipartimentali**

	Unità Operativa Complessa
	Unità Operativa Semplice Dipartimentale
	Unità Operativa Semplice
	*Unità Operativa Semplice di Futura Programmazione
	Organi Esterni
	Dipendenza di tipo organizzativo-gestionale
	Dipendenza di tipo funzionale

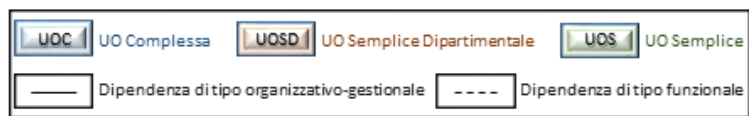


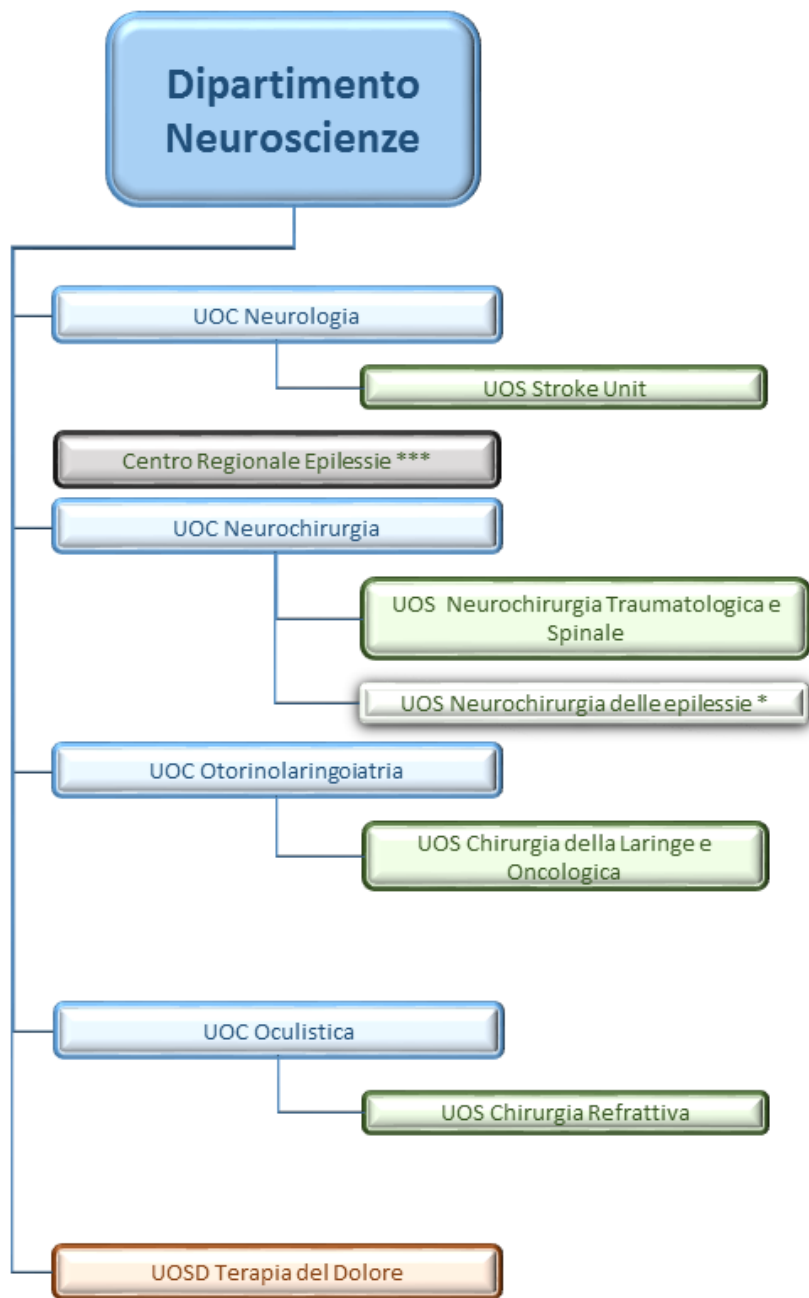






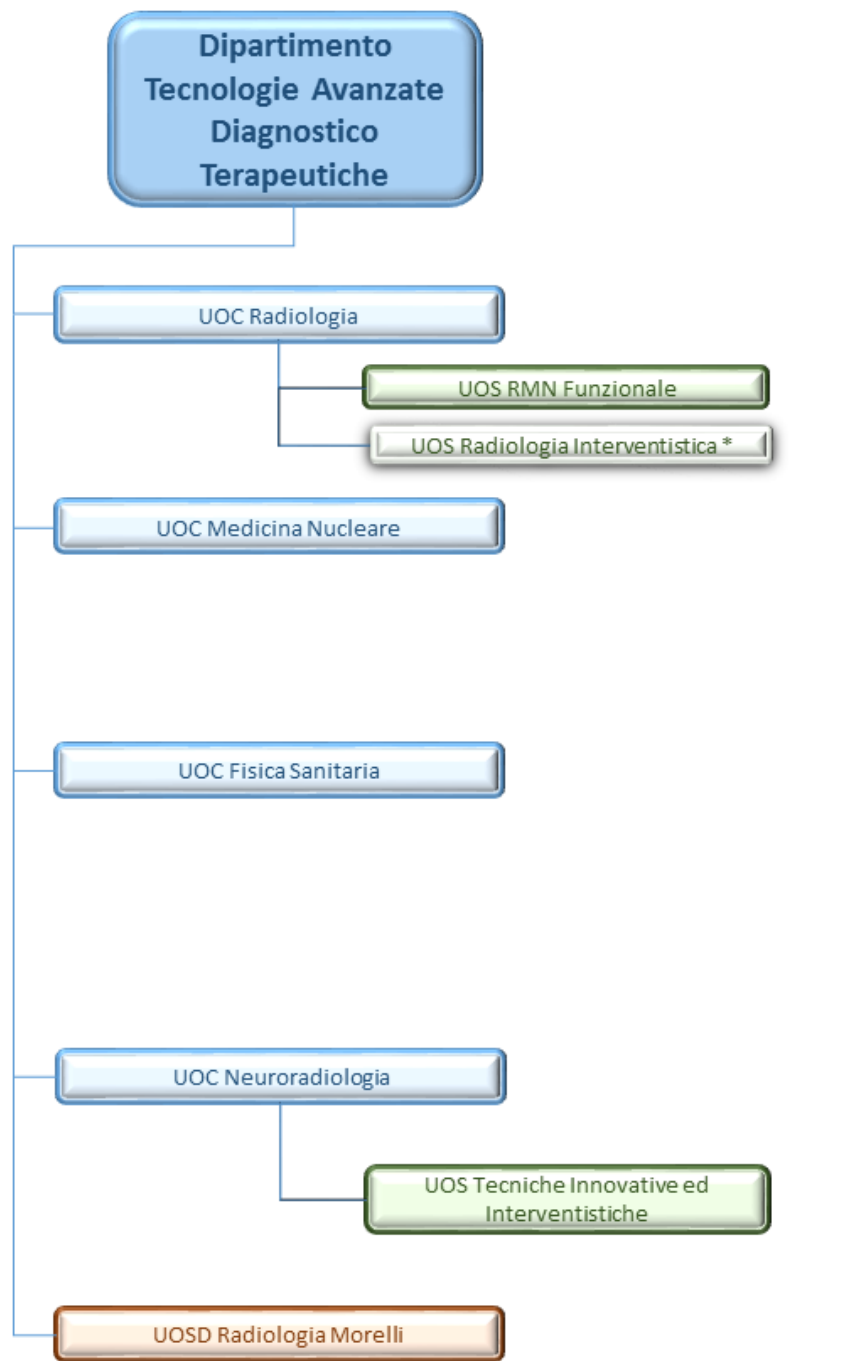
* di futura programmazione
 ** In attivazione





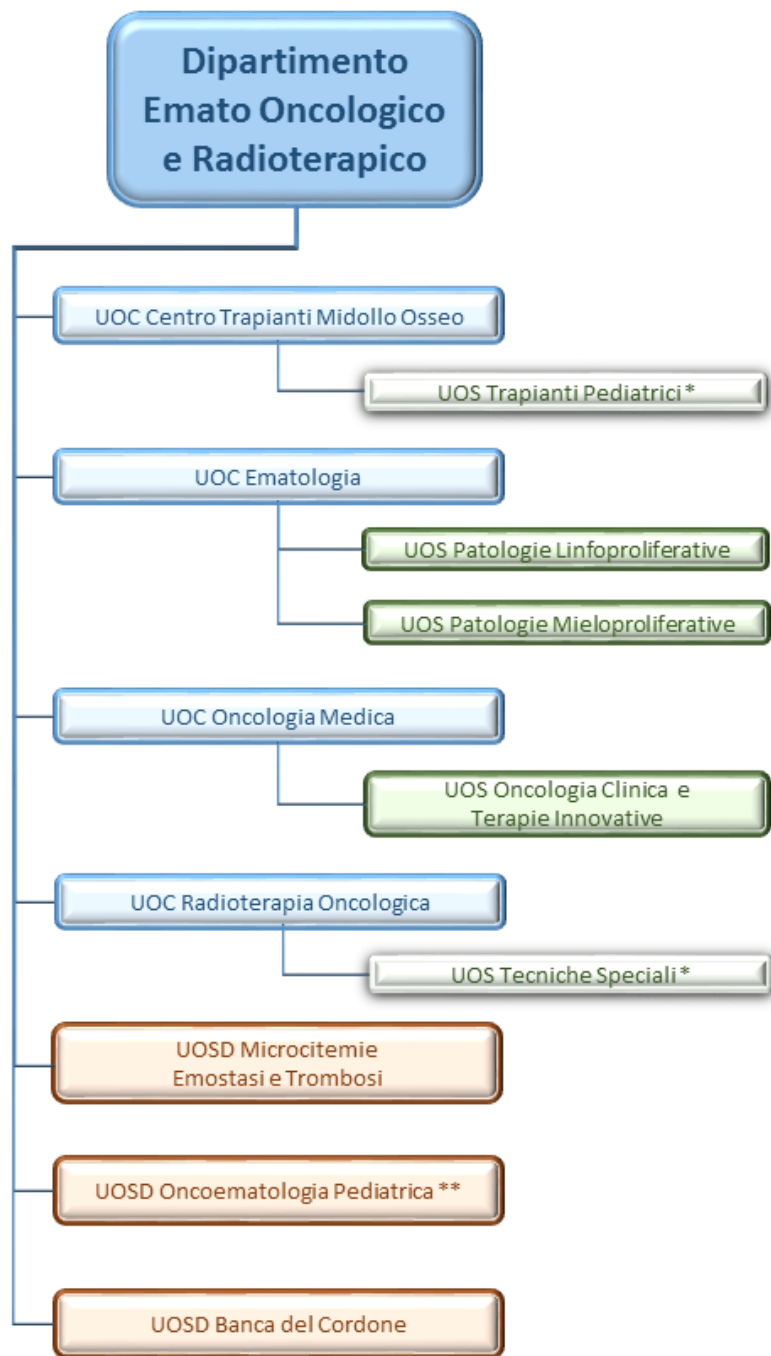
* di futura programmazione
 *** a gestione universitaria



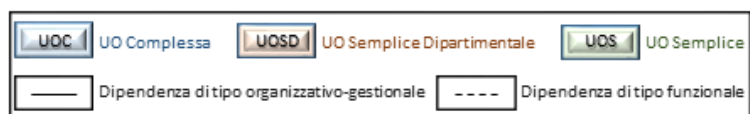


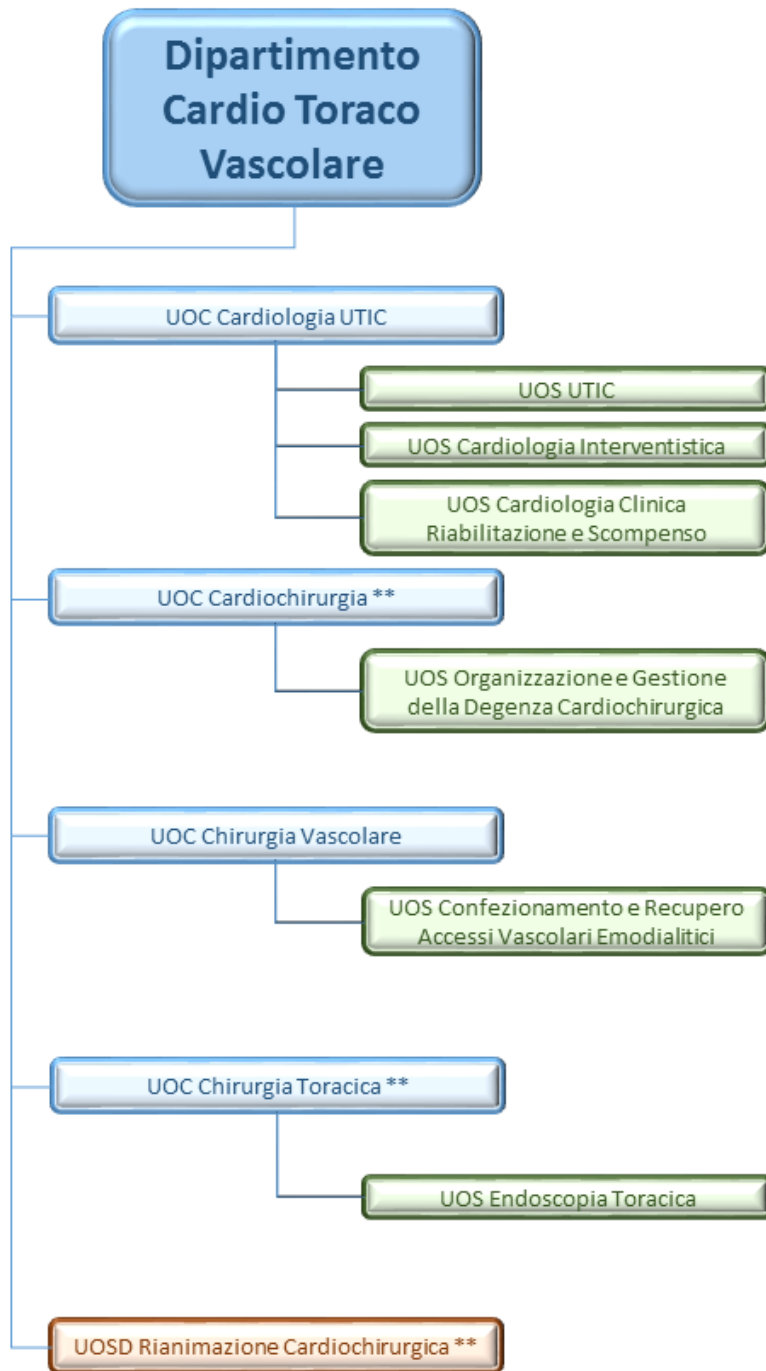
* di futura programmazione





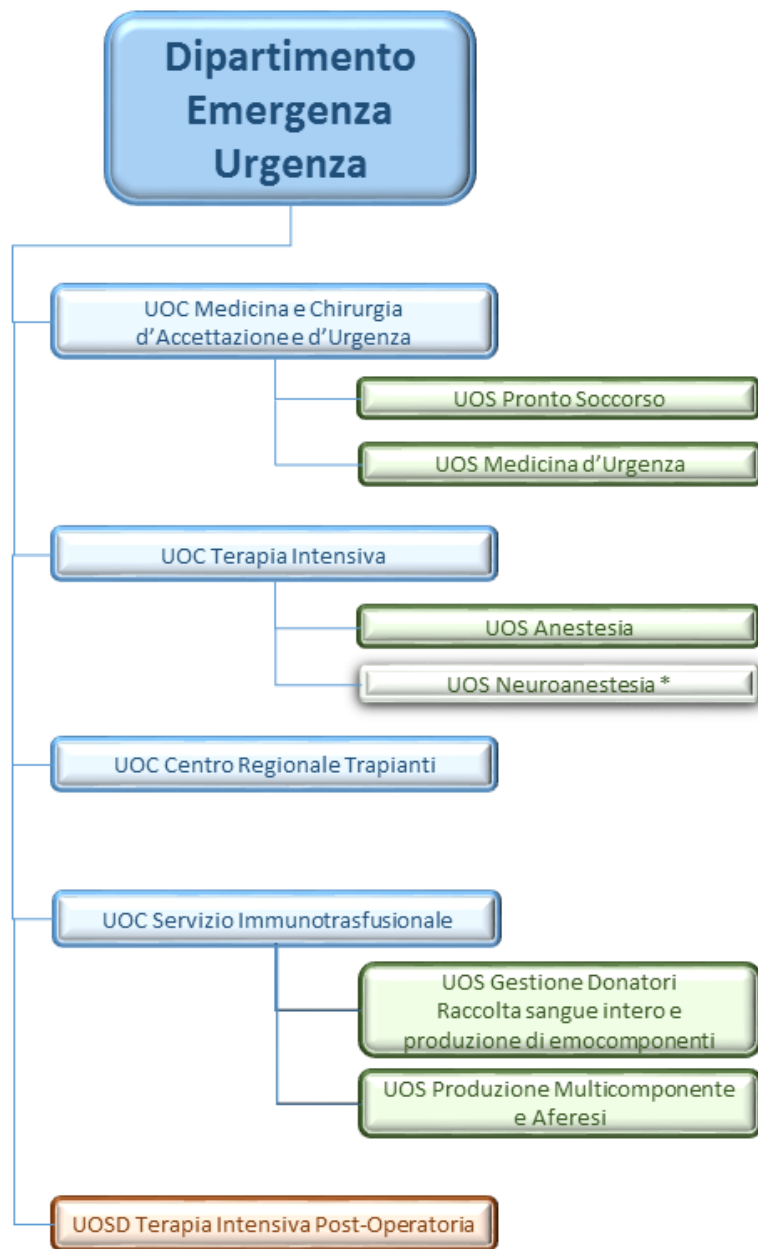
* di futura programmazione
** in attivazione





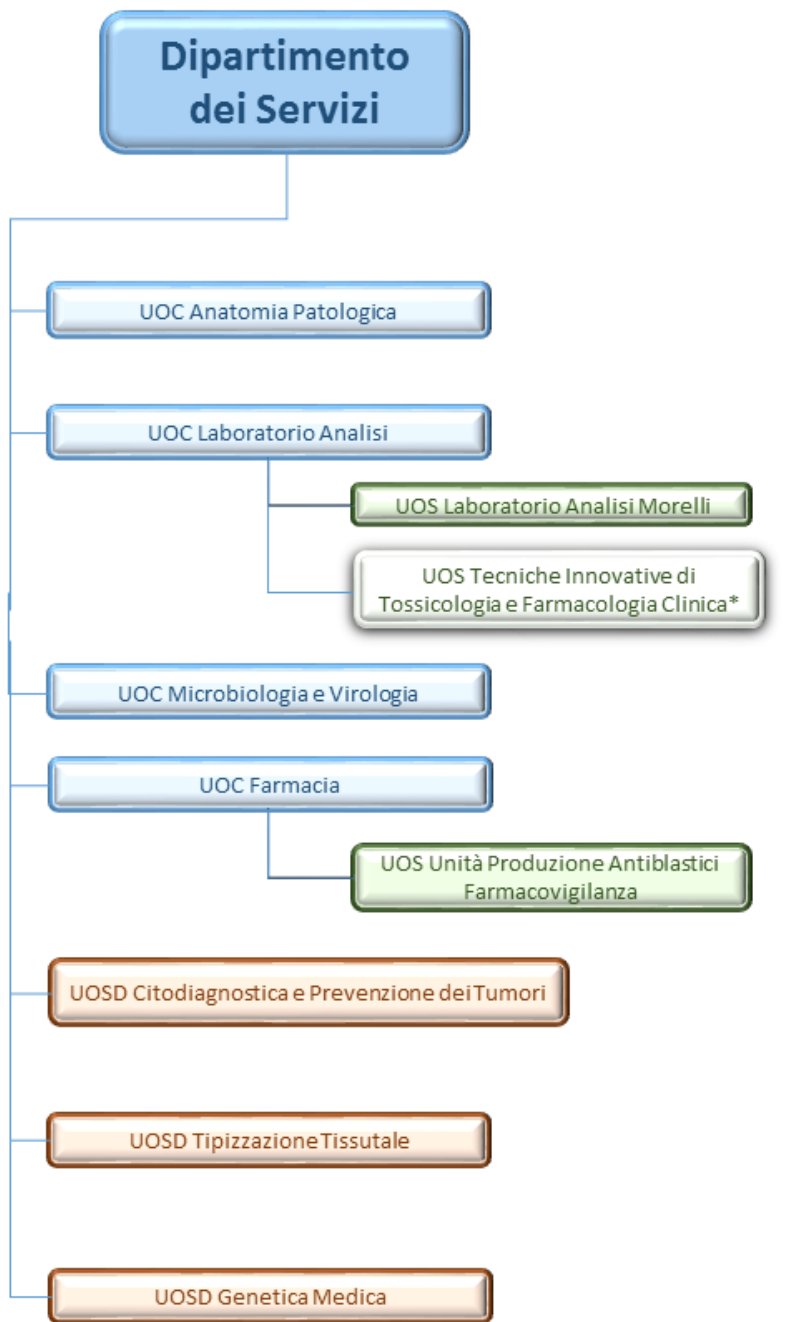
**** In attivazione**





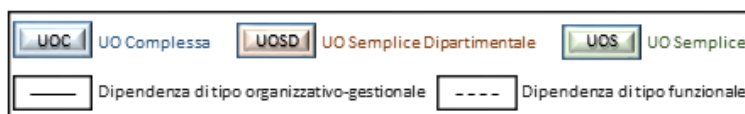
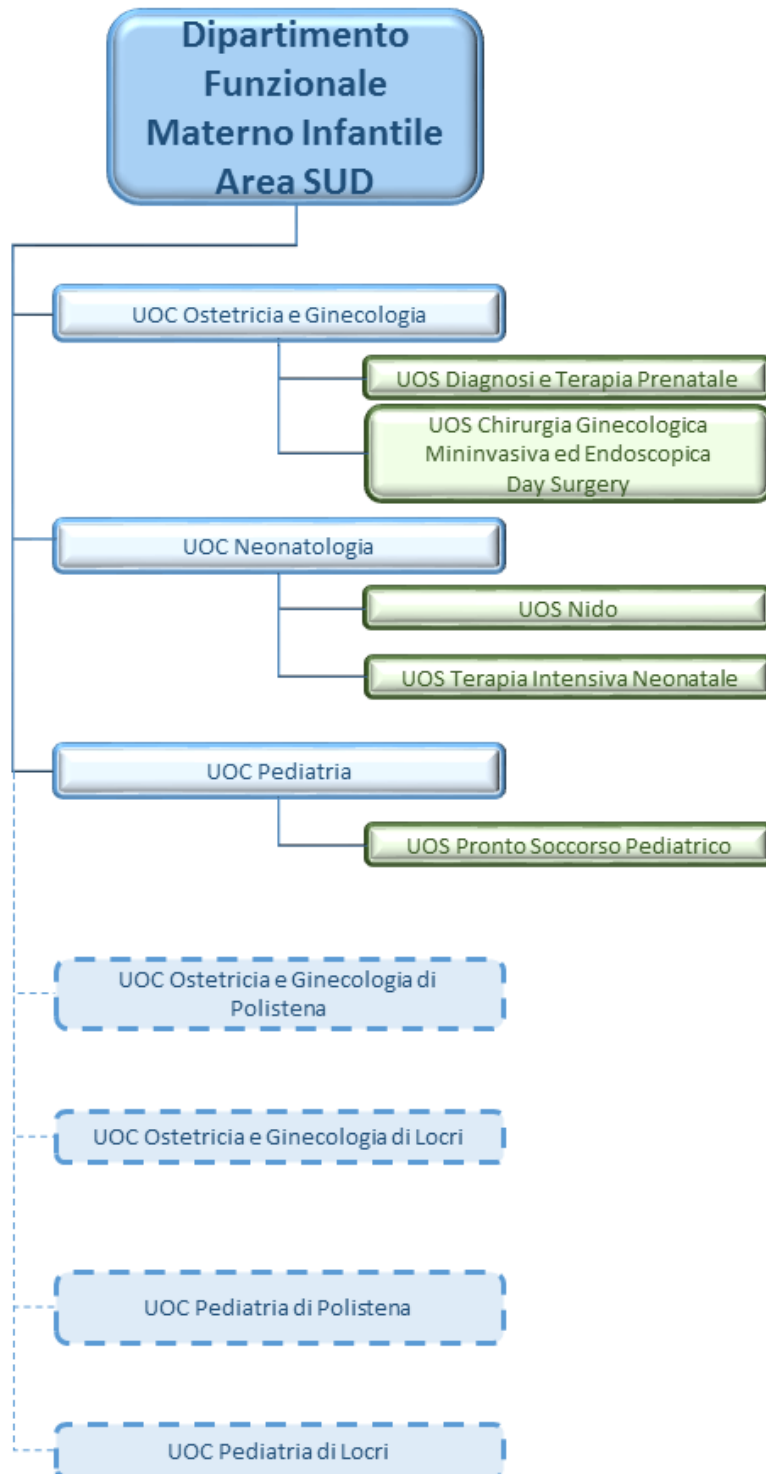
* di futura programmazione

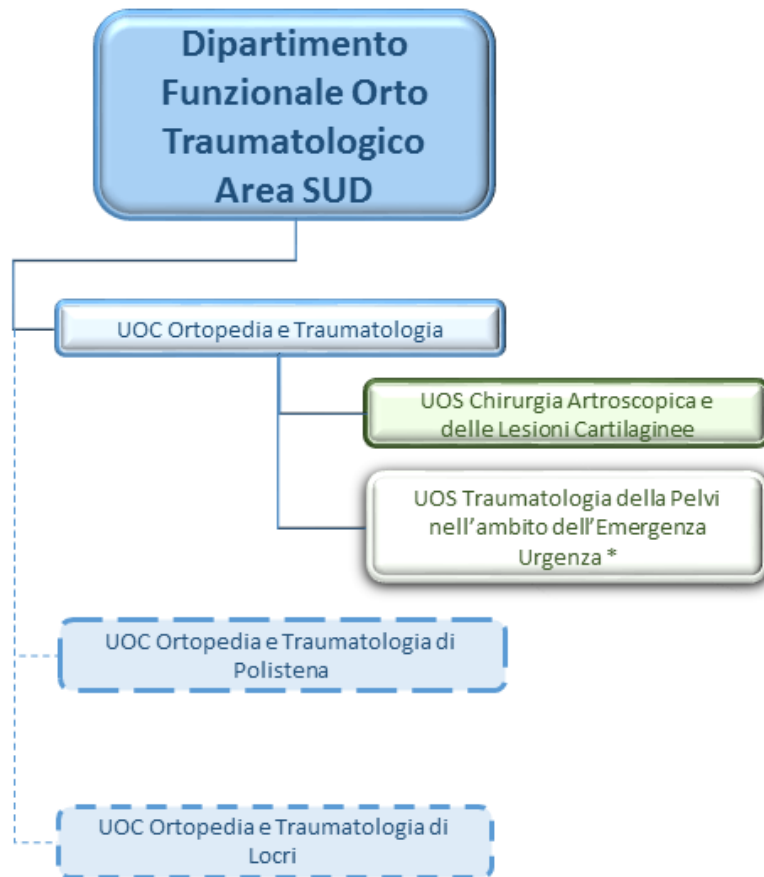




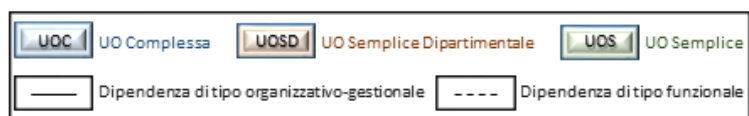
* di futura programmazione

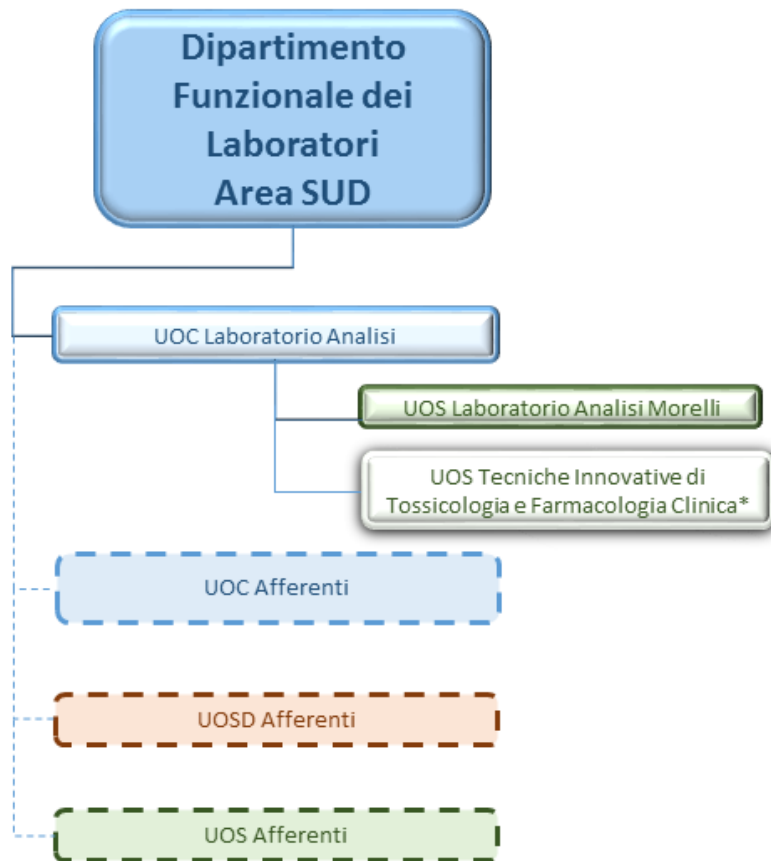






* di futura programmazione





* di futura programmazione



